



Cubicle Hardware

# *Catalogue*

# CONTENTS

---

## Cobtec

---

Who We Are 1

What We Value 2

## Aluminium

---

Latches 5

Hinges 9

Legs 13

Brackets 17

Headers 18

### Accessories

Hooks 21

Toilet Roll Holders 22

Keeps 22

Clearline 24

---

Stainless Steel 33

---

Nursery 37

---





## Who We Are

---

“Winner of the **Best Cubicle Hardware & Ironmongery Supplier-UK.**”

-Build, September 2019

Cubicle hardware is in the blood at Cobtec. Durham based, established in 1976, we now have over forty years of experience under our belts and it's fair to say that it shows. Our highly skilled workforce of over 50 members of staff is capable of ensuring that we meet our production deadlines consistently. Offering quick turnarounds, same day dispatch, and ninety days payment terms, you would be hard-pressed to find a better experience on the market.

Having completed installations from Newcastle Airport to the Yorkshire Event Centre, there is nowhere we will not go to ensure the utmost satisfaction of our clients. Not only is the high standard of the products themselves visible on sight, but the care and attention with which we treat our customers is second to none.

Our family-owned business understands the impact of the personal touch and so, despite the fact that we export to over twenty countries worldwide, our customers are never left doubting that they have received a service tailored to their every need. For example, in addition to our extensive range of products we offer both painting and anodising services. As a result, there is a variety of options for component customisation to suit every style of installation.

We work with companies from major brands to small independents to help them build their next project. We genuinely care about each project, so you get our absolute commitment to receive the best possible service at the lowest possible price.



# What We Value

Customer satisfaction is, and always will be, at the forefront of Cobtec. Our ISO 9001 accreditation helps us ensure that clients receive consistently high-quality goods and services. It also makes certain that the welfare of our staff is paramount; there have been zero accidents on company grounds since the doors were opened.

Cobtec is also aware of its impact on the planet. Our thirty thousand square feet of floor space is put to use manufacturing various products, but on the roof above live our six hundred and twenty solar panels dedicated to balancing our environmental impact. In fact, in YEAR alone we put POWER VALUE back into the grid as a result.

We are proud to be completely debt free with no history of borrowing, meaning that Cobtec is very much capable of standing on its own two feet. Indeed, we are passionate about using our independence to give back into the local community as evidenced by our efforts to work with local schools and charities.

In 2017 Cobtec staff held a Macmillan Coffee Morning and organised a Christmas Jumper Day for North Tees Hospital, raising a total of almost £700. Our strong ties with Newcastle and Durham University, along with UTC South Durham, allow us to interact with students and encourage the engineers of the future.



**Established in  
1976**



**Family Owned**



**ISO 9001  
Accredited**



**Quick  
Turnaround**



**Export to over 20  
countries**



**Based in Durham  
(UK)**



**Highly Skilled**



**30,000 SQFT  
Facility**



**Environmentally  
Friendly**

620 Solar Panels &  
Biomass Heating



**Patented  
Technologies**



**No Debt / No  
Borrowing**



**Lean and Efficient**



**4 Group  
Businesses**



**Award Winning**



**Zero Accidents**

# ALUMINIUM

---

Aluminium is our bread and butter here at Cobtec; all cubicle features and accessories are crafted in such a way that every combination of products is as crisp and professional as possible.

With a range of colours available for every part, thanks to our custom painting and anodising capability, your installations are not limited to the albeit stylish base grey of the aluminium. Regardless of the style, there is a Cobtec part to suit.

Not only do our products look the part, they are designed to be easy to install, use, and maintain. This means that, once all the pieces are in place, our hardware is guaranteed to stick it out in the everyday humdrum of the washroom.





# Latches

Our Cobtec latches are all quick and easy to fit, with elegant designs suited to a range of cubicle styles and locations. A range of possible colours are available too. Either by painting or anodising it is possible to tint any latch to a shade of your choice.



## Budget Rotary Latch

Suitable for both Compact Grade and MFC Cubicles. Has a simple coin release safety mechanism.



## Classic Rotary Latch Set

Based on the same design as the budget rotary; it is suitable for solid grade and MFC cubicles.



## Long-Shoot Rotary Latch

Suitable for solid grade and MFC cubicles; it also still uses the simple coin release safety mechanism.



## Durham Latch

A modern robust latch with a range of finishes to compliment the widest range of panel designs/colours and other chosen hardware. Available to suit Solid Grade and MFC cubicles.



## Atlanta Latch

A modern and impact resistant latch available as standard powder coated RAL 9006, or in a range of other colours on request. An all-round excellent value latch.



# Available Colours

---



## Creating a stylish look for a unique finish

Cobtec endeavour to produce high end products at the right price. Style and finish can be a key differentiator when completing a project.

We offer a choice of colours to suit the needs and budget of our customers. We can work with you to ensure you have the perfect end product and with a lasting finish.

Speak to a team member to understand the range we have to offer, working from the RAL Chart for paint and the colour image above for anodised results.

# Hinges

Robust and functional, all our hinges can be set to fall open, closed, or any other position in between by simple adjustment of their nylon risers. Similarly, all can be adjusted to lift off whereby in an emergency one can remove a single screw to enable the door to be easily removed.



## SGL Hinge

This hinge wraps around the door and both the door and fascia are double bolted with 'T' nuts for extra strength. The SGL hinge is for compact grade laminate only.

## CC13 Hidden Hinge

The hinge wraps around the door and is double bolted through with "T" nuts. The fascia can be either double bolted through with "T" nuts or lozenge plate; it can also be face fixed using taptite screws, so no fixings are visible on the front face. The CC13 Hidden Hinge is for compact grade laminate only.



## CC18 Hidden Hinge

This hinge wraps around the door and is double bolted through with "T" nuts, the fascia can be either double bolted through with "T" nuts or lozenge plate. It can also be face fixed with No.10 woodscrews but in this instance, we would recommend three hinges per door, and careful consideration as to where the cubicle is situated. The CC18 Hidden Hinge is for 17-19mm laminate only.





### CC21 Hidden Hinge

The CC21 Hidden Hinge is for 19-21mm laminate. The hinge wraps around the door and is double bolted through with "T" nuts, the fascia can be either double bolted through with "T" nuts or lozenge plate. It can also be face fixed with No° 10 wood screws, but in this instance, we would recommend three hinges per door. Careful consideration as to where the cubicle is situated is advised.

### HI 4/1 Hinge

The hinge is fitted to the edge of the door using two No° 8 x 2" woodscrews. The fascia component is simply screwed into the back of the fascia using No° 8 x 1" woodscrews. The HI4/1 hinge comes as standard to suit panels 17 & 21mm.



### HI 4/4 Hinge

The HI 4/4 hinge comes as standard to suit panels 17 & 21mm. Other panel sizes can be used with longer fixings. The hinge is fixed to the door wood/metal dowel, and No° 8 woodscrew, and bolted through the fascia with a "T" nut fixing and another No° 8 woodscrew.



# Legs

All legs at Cobtec are sleek and modern, able to be used with a variety of complimentary hardware designs. Available as standard in satin anodised or powder coated, a range of colours is available to choose from.

---



## SGL Durham Leg

Designed to complement the Durham Latch, the Durham leg is a modern take on the classic leg. No fixings are visible once installed, the leg is height adjustable and has an inert plastic foot to protect the leg from harsh cleaning chemicals. Suitable only for Compact Grade Cubicles.



## PS 2/7 Wide Base Leg

The PS2/7 cubicle leg is our most robust and popular leg and is offered for both compact grade and MFC Cubicles. Available as standard as a 150mm adjustable leg, it also comes in sizes ranging from 25mm fixed up to 200mm adjustable. A heavy-duty inert plastic foot protects supports from corrosive cleaning fluids.



## CC Leg 1

Commissioned specially, the CC Leg 1 is offered at a fixed height for installations seeking a crisp, elegant finish. Strong and durable, it will endure any washroom environment and look good doing so.



### PS 2/11 Leg

Quick and easy to install. Adjustable height to suit uneven floors. Heavy duty inert plastic foot protects supports from corrosive cleaning fluids.



### PS 2/2-18 Fixed Leg

The PS 2/2-18 is a budget fixed leg for MFC cubicles where there is no need for any adjustment. A basic but strong and effective support leg, it's supplied with a one way 'clutch' head screw to prevent vandalism.



### PS2 2/8-18 Leg

The PS2/8 is a budget adjustable box support leg. It is height adjustable between 130mm and 170mm to suit uneven floors. It is easy to install and comes with all fixings needed.

# Brackets

As with all our products, our brackets can be matched with other Cobtec cubicle features including a wide range of partition supports, hinge and latch designs. Supplied in packs of three, along with all wall, fascia and panel fixing bolts, these brackets are again as standard satin anodised or powder coated; you will not want for colour options.



## WM 3/3 Bracket

The WM3/3 Bracket is a low domed 'L' bracket, suitable for MFC Cubicles.



## WM 3/4 Bracket

The WM3/4 Bracket is a low domed channel bracket with "T" nut fixing through the panel, suitable for MFC Cubicles.



## WM 3/5 Bracket

The WM 3/5 Bracket is a high domed channel bracket with "T" nut fixing through the panel, suitable for 18-21mm Cubicles.



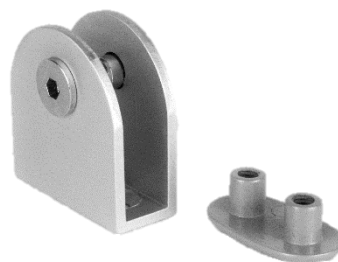
## WM 3/6 Bracket

The WM3/6 Bracket is a high domed 'L' bracket, suitable for MFC Cubicles.



## WM 3/7 Bracket

Suitable for compact Grade Cubicles. Ideally suited for wet areas, it can be supplied with stainless steel fixings if specified at point of order.



## WM 3/8 Bracket

Suitable for compact Grade Cubicles. This bracket can also be supplied with a Lozenge plate to the front face in place of 'T' Nuts.

# Headers

---



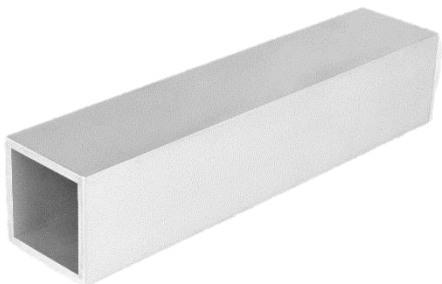
M38223 L Angle



U Channel



P Header



Square Channel

# Accessories

Often, it is the little touches that make an appealing cubicle. Even if it's just a place to hang your jacket, the convenience of a simple if well-designed coat hook is a welcome one. It's always an idea to avoid overlooking these amenities when creating an installation, and you'll find none better than these at Cobtec.

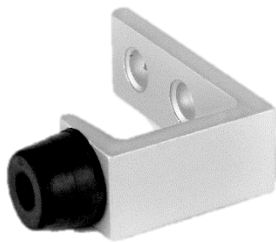
## HOOKS

---



### Clear Coat Hook

The ClearLine coat hook is a concealed fix coat hook, available as bolt through or Face fix. Suitable for both Compact Grade and MFC Cubicles.



### CH 7/1 Coat Hook

The Ch 7/1 coat hook is fitted with a rubber buffer to prevent damage to the partition when the door swings open. It is fixed using two countersunk screws or bolted through on request. Suitable for both Compact Grade and MFC Cubicles.



### CH 7/2 Coat Hook

The Ch 7/2 Hat and Coat hook is fitted with a rubber buffer to prevent damage to the partition when the door swings open. It is fixed using two countersunk screws or bolted through on request. Suitable for both Compact Grade and MFC Cubicles.



## Toilet Roll Holders

---



### TR 5/2

Can be supplied as face fix or bolt through depending on application. Spring loaded plastic roller which is easily removed to change the roll.



### Tr 5/2-L Toilet Roll Holder

Lockable toilet roll holder. Can be supplied as face fix or bolt through depending on application. Lockable holder to prevent vandalism and theft.

## Keeps

---



### KP 1/1 Keep

The KP 1/1 is our standard box keep.



### KP 1/2 Outward Opening Keep

The KP 1/2 keep is to be used where disabled access is required using an outward opening door.



### KP 1/4 Keep

The KP 1/4 is a rounded keep for use on compact grade cubicles only.





# CLEARLINE

---

Clearline is the custom installation service offered at Cobtec. Made to measure and assembled in house at our Durham facility, Cobtec's full aluminium pilaster solution is site ready on arrival. With all fittings completed prior to installation, our team can have a washroom ready in no time.

Rifled extrusion reinforces the pilasters for strength and durability. It goes without saying that longevity of the installation and ease of maintenance is assured. With full height cubicle options available, there's no shortage of variety available.















# STAINLESS STEEL

---

While aluminium is the staple of Cobtec, we aren't behind the door when it comes to stainless steel products. Manufactured to a visibly high quality, our products are built to last- and look good doing it.

# Steel

Stainless steel flush fitting hardware to bring out the most of your cubicles.

A premium look without the premium price.

---



## SSCO-L55 Latch

High-quality stainless-steel thumb turn latch. Suitable for flush finish cubicles, in all laminate sizes. Can easily be modified to suit thicker panels in flush finish cubicles.



## SSCO-SH70 Hinge

High-quality stainless-steel flush fitting rise and fall hinges. Suitable for any size laminate.



### SSVS-U01 Leg

Our stainless-steel leg is suitable for Compact Grade and MFC Cubicles and can be easily modified to suit other board sizes. High quality stainless steel adds style to any cubicle; couple with our other stainless hardware for that premium look.



### SSVS-BL45 BRACKET

High-quality stainless-steel angle bracket, suitable for Compact Grade and MFC Cubicles. Comes supplied in packs of three with all relevant fixings. Couple with our other stainless hardware to create that premium look.





## NURSERY

---

Kids like colours, there's nothing to it.

That being said, not just any old palette will do. This is where the Nursery range at Cobtec comes into its own.

With its bright primary colours and bespoke teddy-shaped components, there is scarcely a more child-friendly washroom experience.

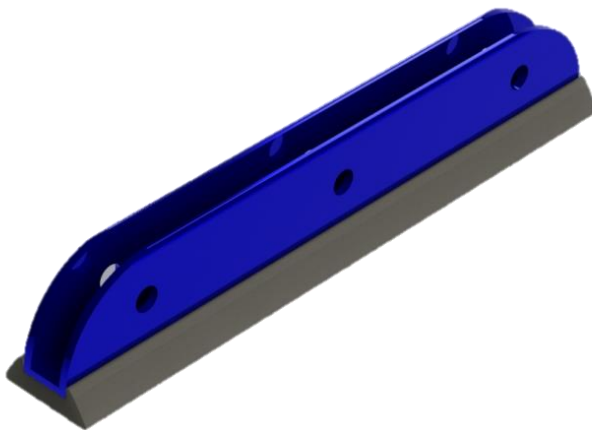
# Nursery

Hardware designed with toddlers in mind, making those toilet visits that little less daunting in the early years, coupled with other colour coordinated hardware to create a bright and happy place.



## Teddy-Head Faceplate

Unique to Cobtec, the nursery latch comes with a Teddy Head faceplate, and our standard coin release safety mechanism. First powder coated and then etched to provide the facial features, make your nursery cubicle stand out with the fun design. Supplied with all necessary fixings and includes as standard an inward opening keep, outward opening keeps can be purchased separately.



## Nursery Foot

Our Nursery foot is designed to be used instead of a standard leg for extra rigidity where no headrail is used. A custom length radiused channel is secured to the floor on top of a piece of rubber extrusion to protect it from cleaning solutions. The Pilaster is then fixed into the channel and then either bolted through or face fixed to secure in place. This firmly fixes the pilaster to the floor and prevents movement.